

Sunón

Headquarter & Experience Center

Add: Sunon Central Business Building, No.200 Shimin Street, Qianjiang CBD, Hangzhou, Zhejiang Province, China

Russia Branch & Experience Center

Add: Sky Masnion, No.118 Varshavskoe Road, Moscow

European R&D Center

Add: Brunnenstrasse 156, 10115 Berlin, Germany

USA Headquarter & Experience Center

Add: 525 Technology Drive Suite 150 Irvine CA.92618, USA

India Branch & Experience Center

Add: Floor I & II, 643, Rd Number 36, Aditya Enclave, Venkatagiri, Jubilee Hills, Hyderabad, Telangana 500033, India

[f](#) [t](#) [o](#) [in](#) @sunonfurniture

www.sunonglobal.com

info@isunon.com



ATLAS

Sunón



Atlas

Inherit aesthetic elements
from nature and technology
Create a flagship-grade
futuristic workspace

Atlas

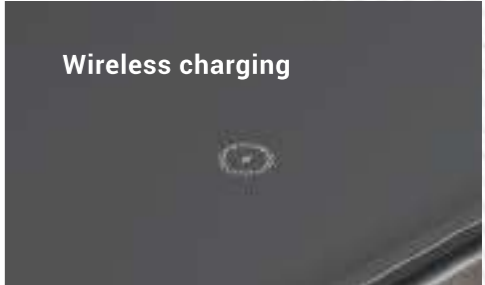
**At the nexus of
technology and
beauty**

Atlas illuminates the essence of technology and beauty. The appearance, material, and technique adopted by it together demonstrate high requirements for details and quality. As a flagship masterpiece, it is ready to bring you a futuristic and intelligent working experience.



Designed for ambitious and forward-looking doers.
To set the trend and lead the changes.





Wireless charging



Electric track



Intelligent fingerprint lock



Interior division

As smooth as a fish in the water



Cutting-edge technique

What attracts people are those made by heart.

Fresh out of elegance

As beautiful and pleasant as melodies.



It's ups and downs that mesmerize people.

With gesture sensor merged, Atlas aims to upgrade your intelligent working experience with top-notch technology and present the excellent user experience in the future.



Visualization
Zero contact
Zero noise
Zero wire

Aesthetic elements inspired
by nature and technology bring
futuristic intelligent space



Display the temperament of sage and the
courtesy of gentlemen.





Think big and embrace changes.



A moderate degree of visibility.

Low cabinets and tea cabinets are like blocks scattered in the city, being pleasing to look at and pragmatic to use with.



Mobilize five senses

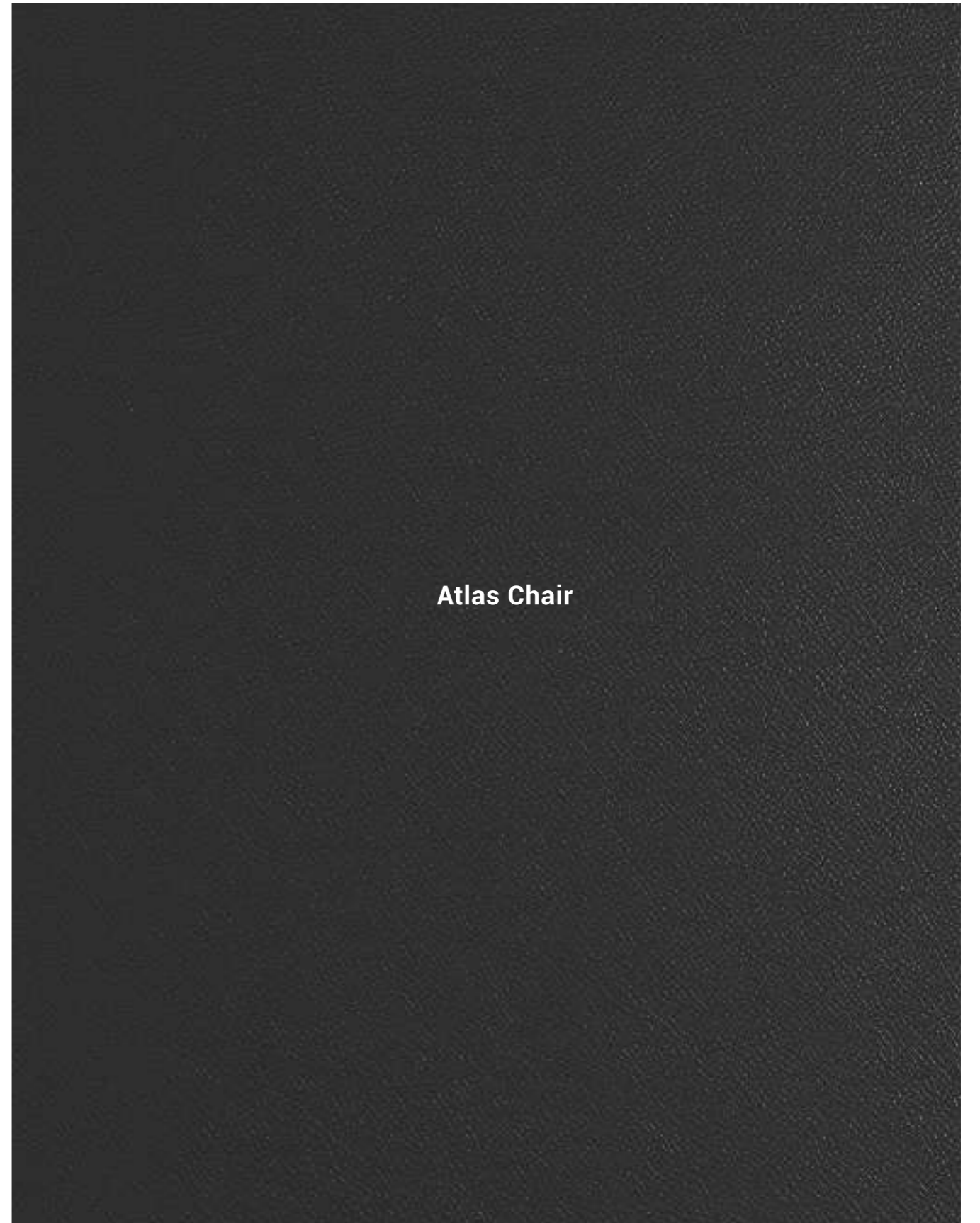
An ingenious space inherits the skillful achievement of craftsman and makes new definitions about the intelligent office in the future.

Mini-cabinet looks dainty and delicate, a total delight to your eyes even if in the corner.





Chosen cow leather with refined stitching together constitutes a fine touch under your fingers and exudes a calm demeanor.



Atlas Chair



Born with total purity.





The three-stage cushion makes a mix of soft, medium and firm foams, offering long-lasting comfort.

1

Clad in Nappa leather, the armrest strikes a perfect balance between comfort and beauty, providing a design aesthetics as pure and luxurious as possible.

2

Italian Donati mechanism brings user-friendly operations and one-piece simple visuality.





Lead a brilliant career

Carry on the design aesthetics of Rolls-Royce, and inject blue blood into the chair. Atlas stands out at the first sight.





60mm-diameter PU casters guarantee excellent bearing capacity and noise-canceling movement.





Specification

Modern Simple Tea Table



EK88L/R.288224
W2880*D2240*H750-1150(mm)



EK87L/R.248824
W2480*D2240*H750-1150(mm)



EK86.200100
W2000*D1000*H750(mm)

File cabinet



EK98.326043
W3260*D430*H2050(mm)



EK97.280043
W2800*D430*H2050(mm)



EK96.230043
W2300*D430*H800(mm)



EK95.190043
W1900*D430*H800(mm)



EK94.120066
W1200*D662*H672(mm)

Chair



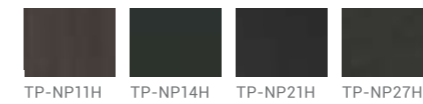
CAT80SQ
W670*D650*H1255(mm)



CAT60SQ
W670*D650*H995(mm)

Material

Main color Auxiliary color



TP-NP11H TP-NP14H TP-NP21H TP-NP27H